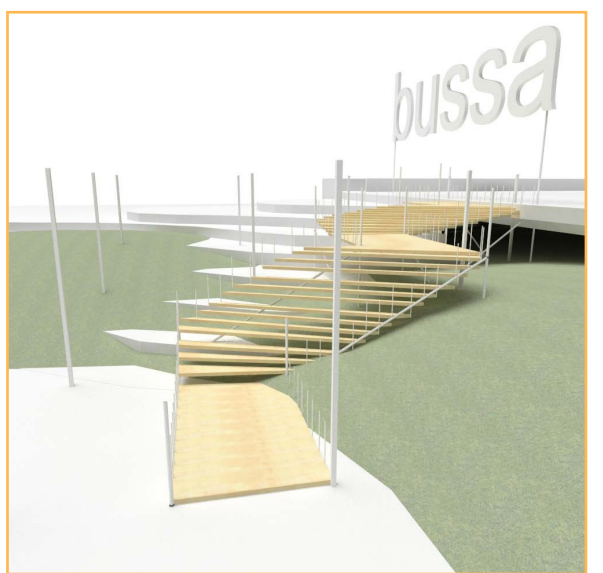
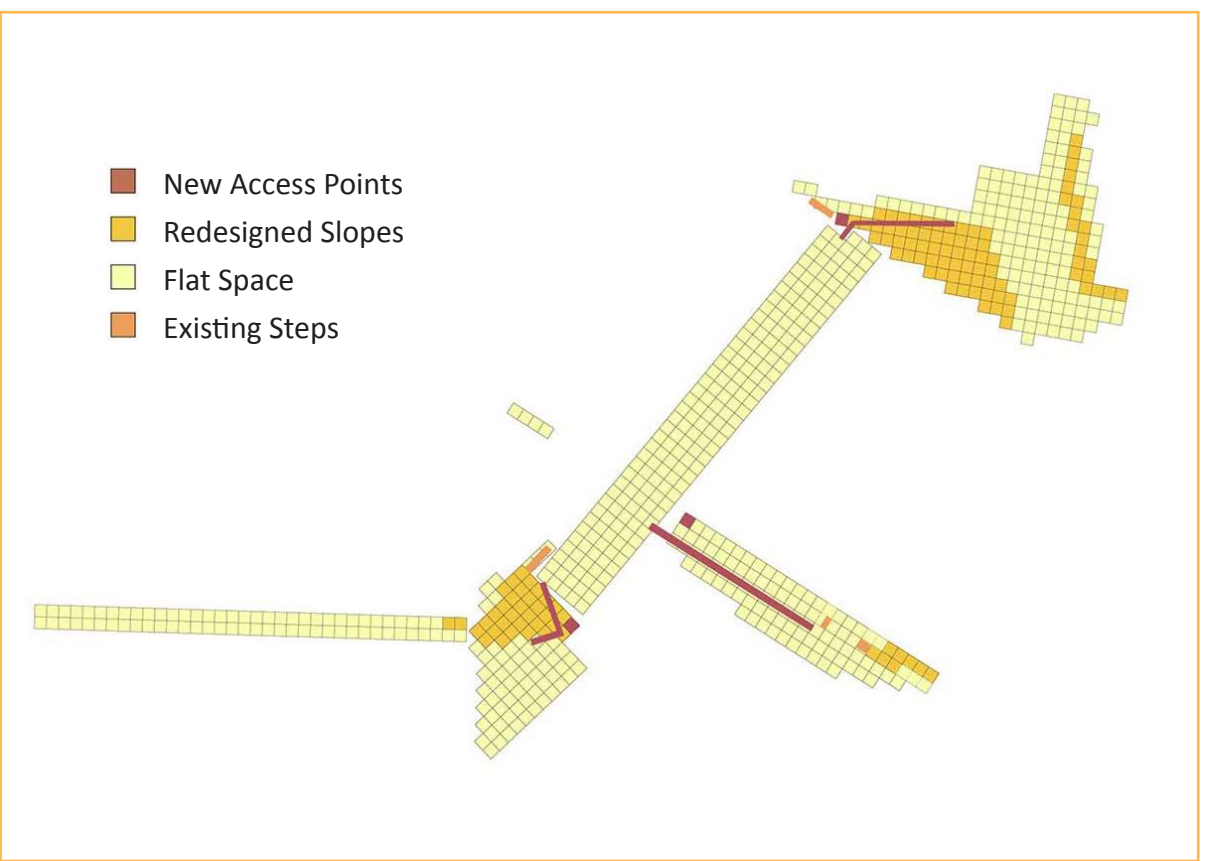
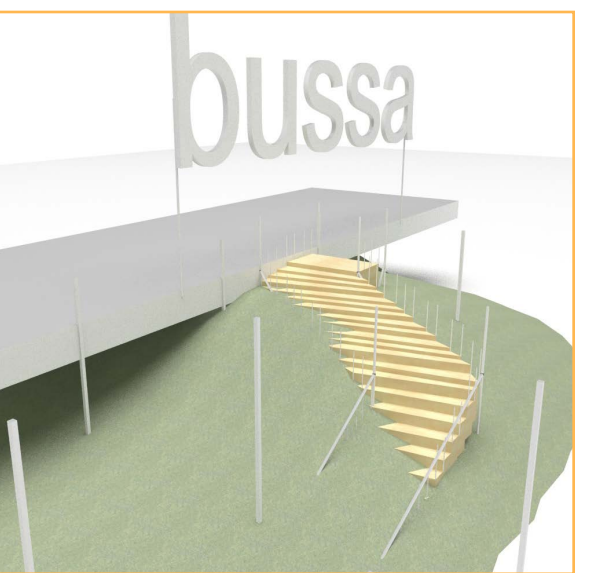


- The "framework" will create an initial landscape of grass surfaces, drainage infrastructure and preliminary planting configuration.
- Critical improvements to pedestrian and cycle access will be established at the outset of the project.
- A "point-cloud" structure of grid and the definition of component plots for future growth will be established.
- This structure will enable the subsequent delivery of an evolving and flexible programme of the occupation of components and the participative engagement with the development of the park.
- Early interventions within this structure will be tested as a preliminary phase of the "point-cloud" park as active engagement.

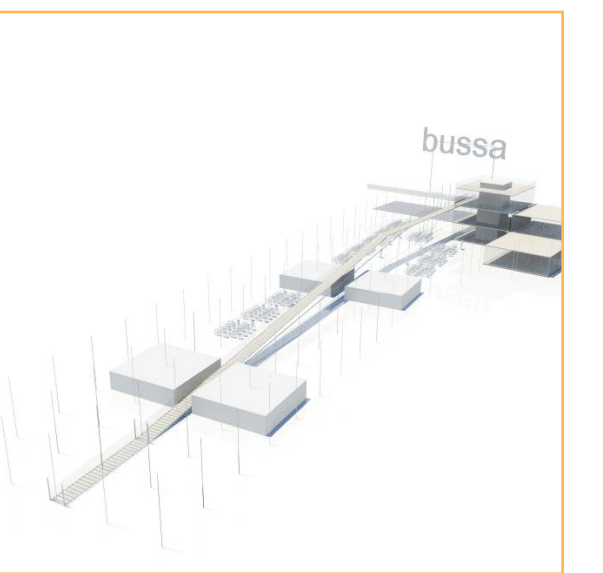
	Year 1				Year 2				Year 3				Year 4				Year 5				Year 6				Year 7				Year 8				Year 9				Year 10				Year 11			
Framework (Phase 1)																																												
Point cloud structure																																												
Infrastructure																																												
Access structures																																												
Edge pavilions																																												
Private site																																												
Evolution (Phase 2-4)																																												
Landscape establishment																																												
Base landscape maintenance																																												
Landscape evolution (capital investment)																																												
Sports events / facilities (capital / capital return)																																												
Art and Culture (capital investment)																																												
Seasonal commercial events (capital return)																																												
Local events (capital subsidy)																																												
Regular commercial markets (capital return)																																												
Quarterly market																																												
Cumulative sustainability																																												



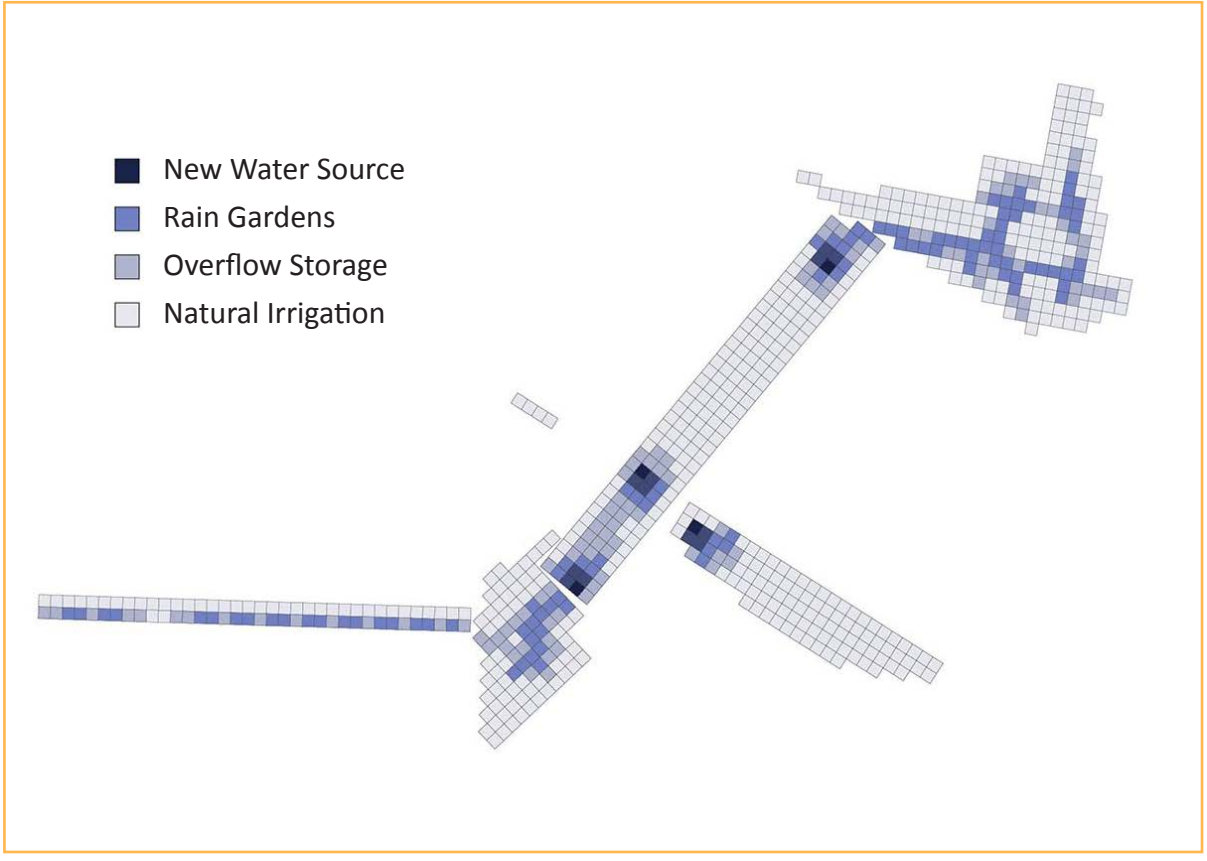
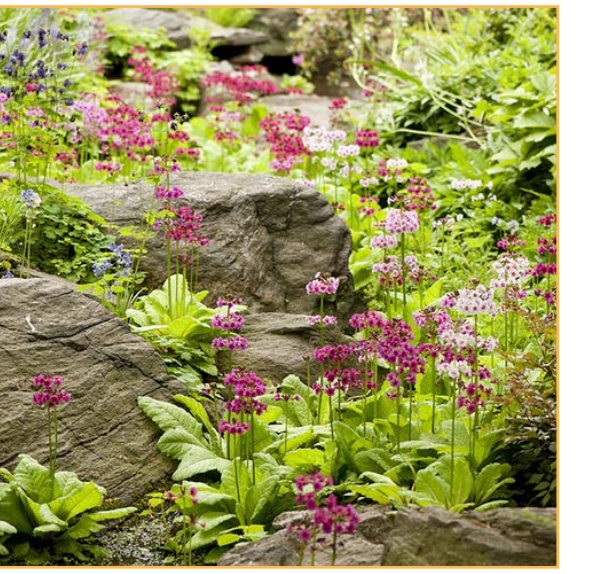
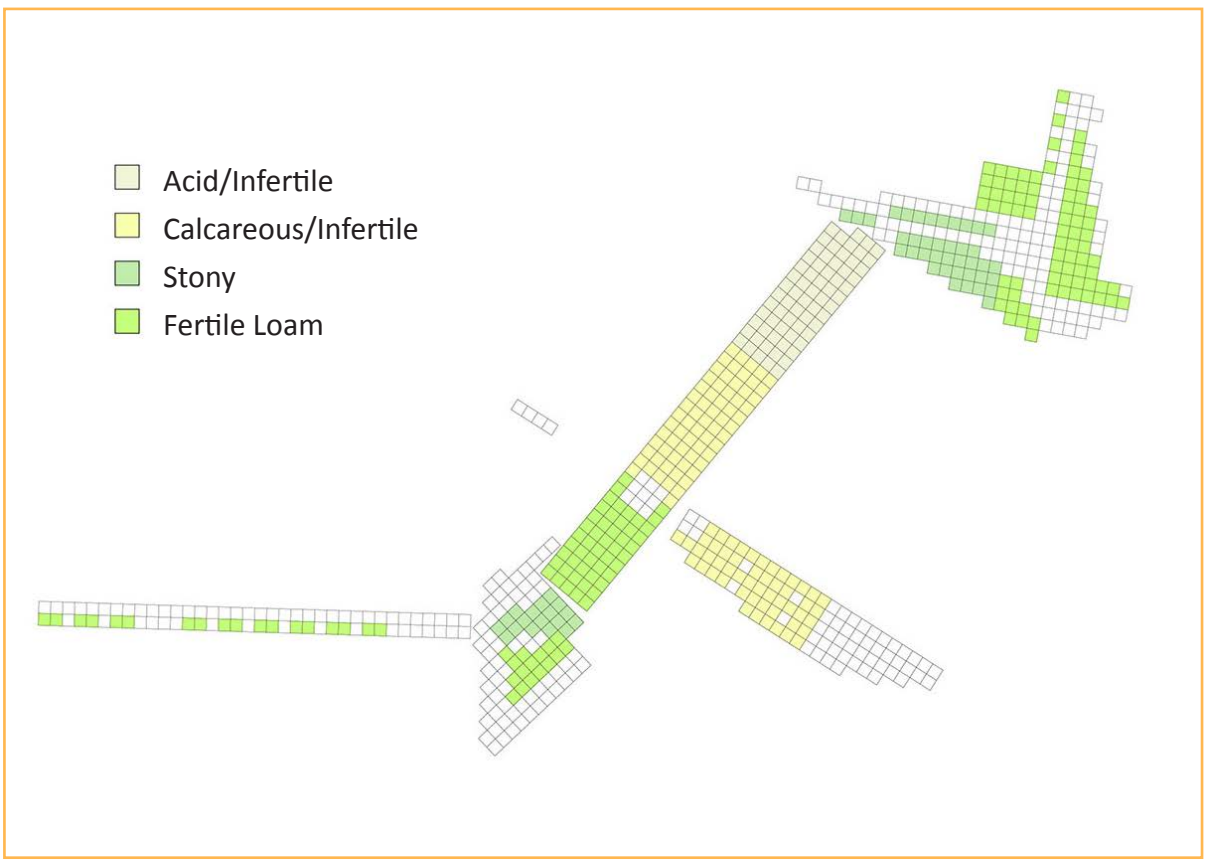
South access
Timber deck with lightweight steel structural support resting on the contours of the terraced landscape.



North access
Timber steps built off ground and existing structures.



East access
Timber deck 1:20 ramp between Metro rooflights for cycle access to Cavalcavia Bussa level and modular cycle storage structures within mesh enclosures.



South access

- Timber deck with lightweight steel structural support resting on the contours of the terraced landscape;
- Lift core to Cavalcavia Bussa level;
- Gateway signage;
- Integrated slide within terracing.



North access

- Timber steps built off ground and existing structures;
- Lift core to Cavalcavia Bussa level;
- Gateway signage.

Slope plan

- Terraced landscapes to create play space, informal seating and shallower access routes;
- Cycle route marked with vehicle access maintained for servicing park;
- Gabion walls formed using recycled material from park construction process.

Cavalcavia Bussa components

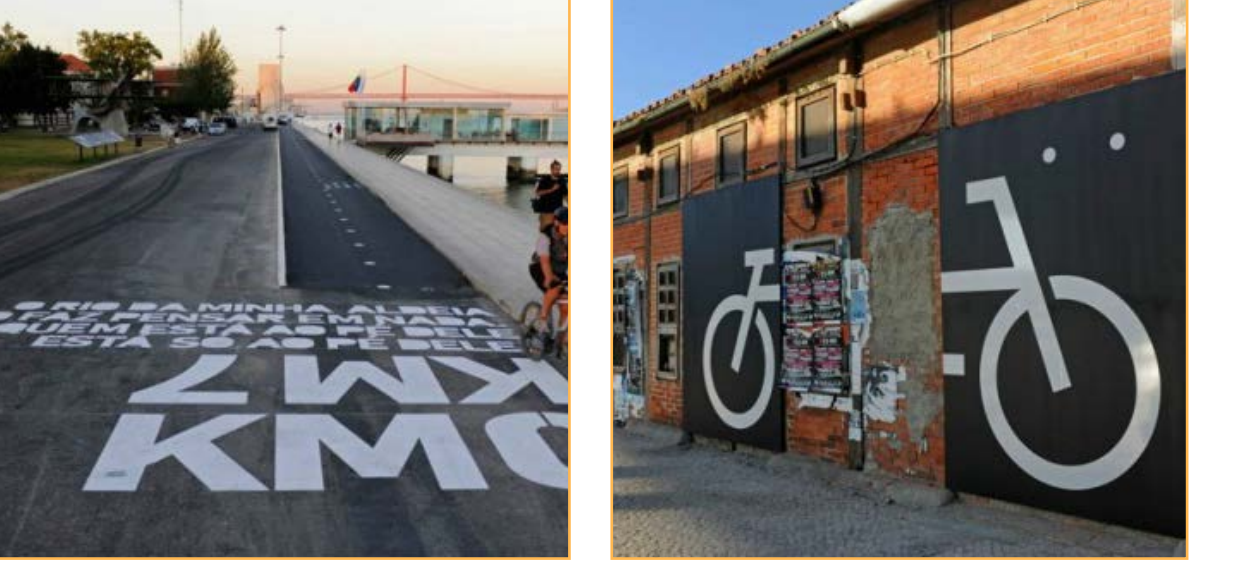
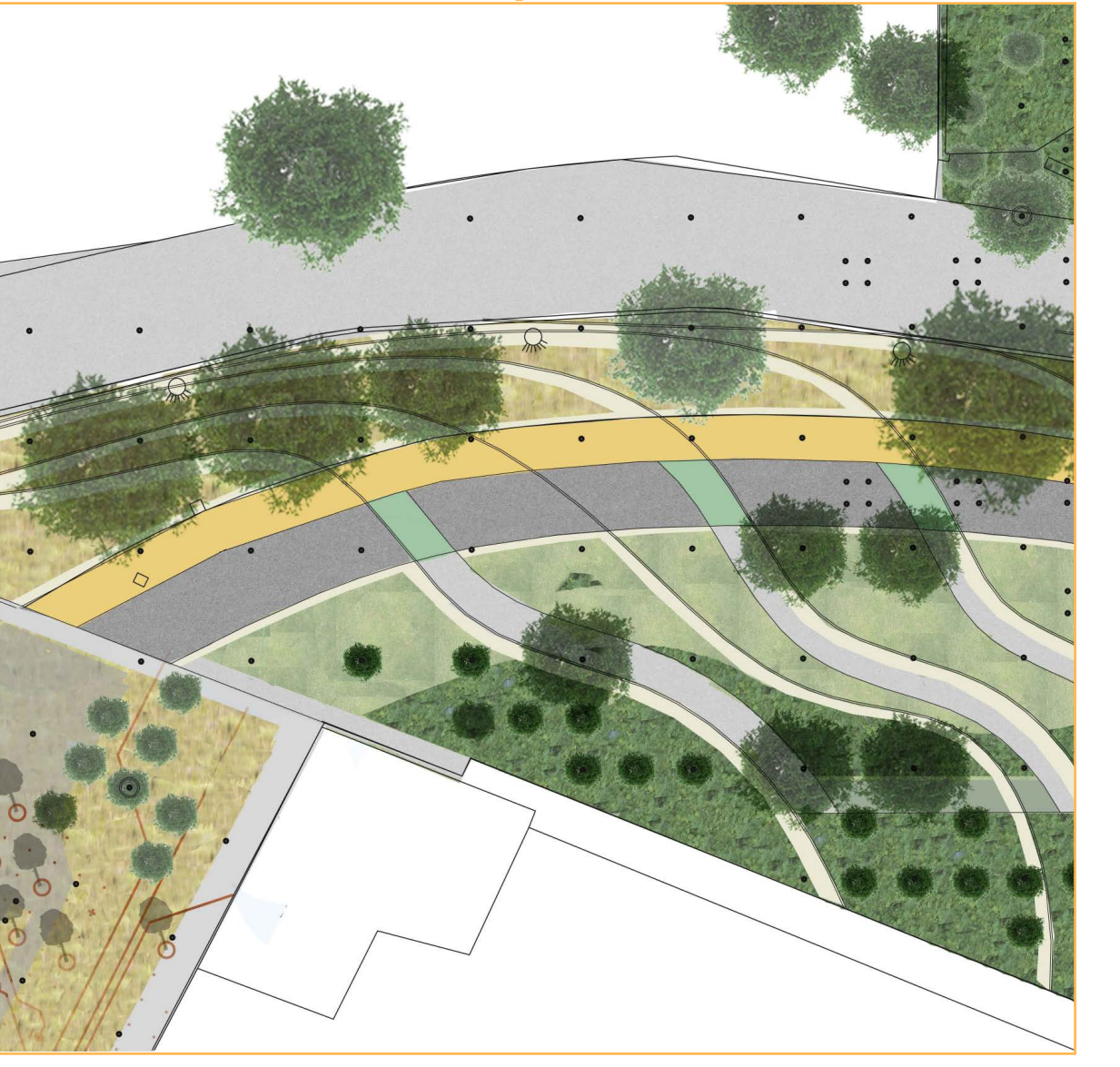
- 195 grid components;
- Initial "framework" grassland condition with fixing points for progressive evolution of park environment.

East access

- Timber deck 1:20 ramp between Metro rooflights for cycle access to Cavalcavia Bussa level;
- Cycle storage tower with stacked cycle storage, internal ramp within mesh enclosure and direct access off cycle ramp and Bussa slab;
- Modular field of cycle storage;
- Pedestrian lift core to Bussa level;
- Gateway signage.

Slope plan

- Terraced landscapes to create play space, informal seating and shallower access routes;
- Cycle route marked with vehicle access maintained for servicing park;
- Gabion walls formed using recycled material from park construction process.



Street improvements

- Street planting;
- Phased evolution of vehicular movement transformation.

